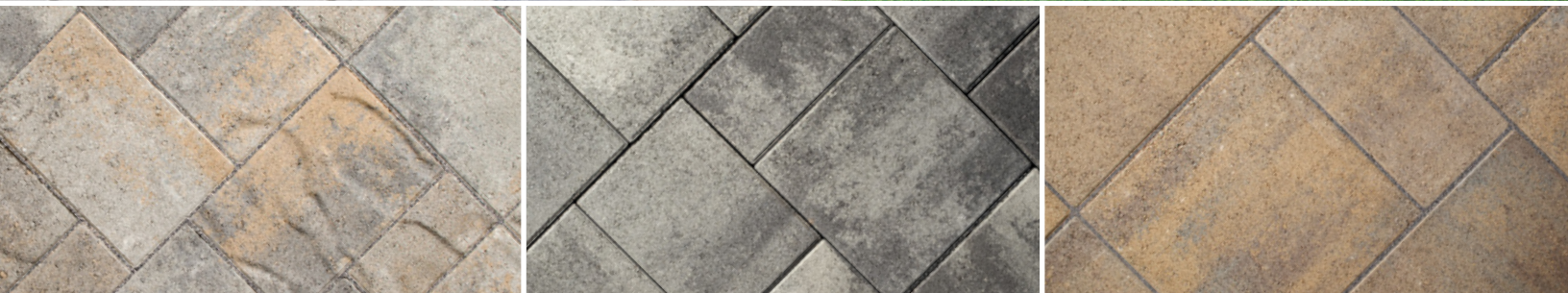




IN-STOCK  
PRODUCTS

2024



 **BELGARD**  
PAVES THE WAY

 **SiteOne**  
STONE CENTER



# TOGETHER, LET'S BRING YOUR OUTDOOR DREAMS TO LIFE

Belgard® has long been the leading brand of pavers and landscape wall products throughout North America. With over 20,000 hours of research and development spent each year, we don't just follow the trends, we create them. Trusted by contractors, engineers and homeowners alike, we pave the way with unmatched expertise and enduringly beautiful products backed by a lifetime transferrable limited warranty.

For over 20 years, Belgard has partnered with SiteOne® Landscape Supply, North America's largest supplier of wholesale goods in the green industry. Our combined network of SiteOne Preferred Partners and Belgard Authorized Contractors provide superior craftsmanship using Belgard products. Together, we can create a stunning outdoor space that will enhance your home and the time you spend there. You've been dreaming about it. It's time to make that dream a reality.

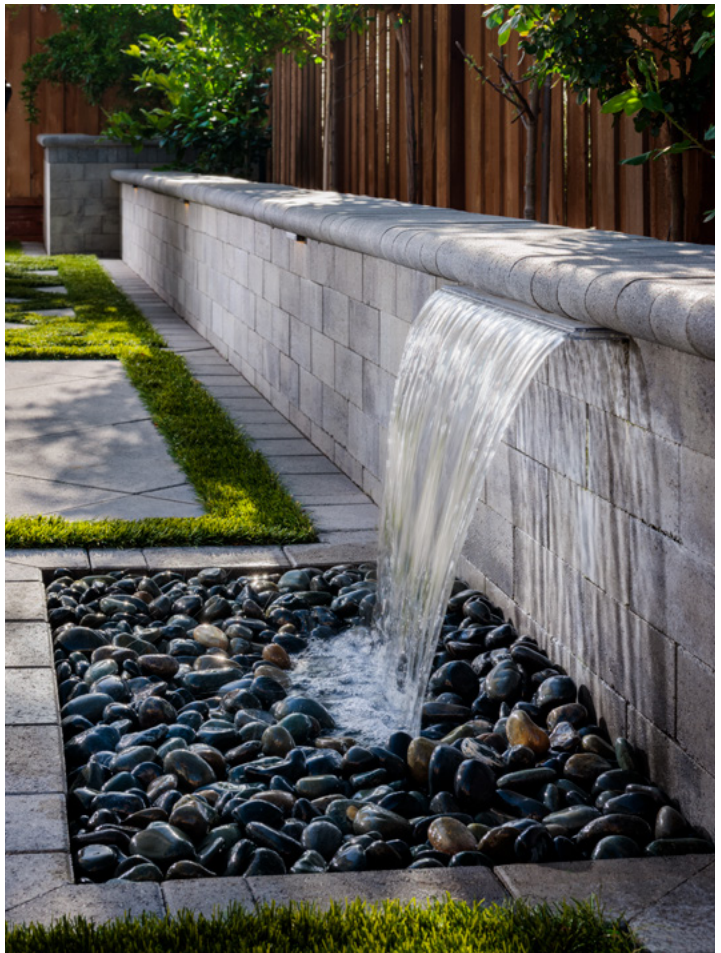
## IN-STOCK PRODUCTS

You'll have full confidence with our IN-Stock products for anything you need to finish your project worry free.

Whether you are designing, bidding or installing, SiteOne will have what you need.

## ORDER-IN PRODUCTS

For all other products featured in the Belgard® catalog, take advantage of our Order-IN Program and have them delivered as quickly as possible.



**El Cajon #1039**  
13288 Highway 8 Business  
El Cajon, CA 92021-1871  
**619.561.6003**

**Temecula #1040**  
42368 Rio Nedo  
Temecula, CA 92590-3708  
**951.296.3433**



# AVALON SLATE & ORIGINS™ ACCENT

## ABOUT

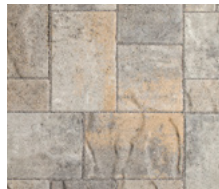
The dimensional texture of Avalon Slate offers the natural look of cut slate. This three-piece system is available to suit a variety of design needs.

## APPLICATIONS

· Walkways · Patios · Driveways · Pool Decks

## SPECIFICATIONS

DIMENSIONS	THICKNESS	SQ. FT./ PALLET	PALLET WEIGHT	UNITS PER PALLET
3 Piece 6 x 12, 9 x 12, 12 x 12	60mm	120	3,230	160
6 x 9	60mm	112.5	3,045	300



VICTORIAN  
3PC  
6 X 9



## ABOUT

Both durable and adaptable, Cambridge Cobble® offers a more tailored, architectural look with its gently rounded corners and domed pillow top surface.

## APPLICATIONS

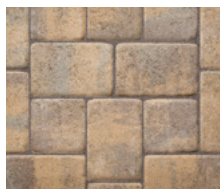
· Walkways · Patios · Driveways · Pool Decks

## SPECIFICATIONS

DIMENSIONS	THICKNESS	SQ. FT./ PALLET	PALLET WEIGHT	UNITS PER PALLET
6 x 6	60mm	120	3,230	480
6 x 9	60mm	112	3,020	300
9 x 12	60mm	120	3,086	160



BELLA  
6 X 6  
6 X 9  
9 X 12

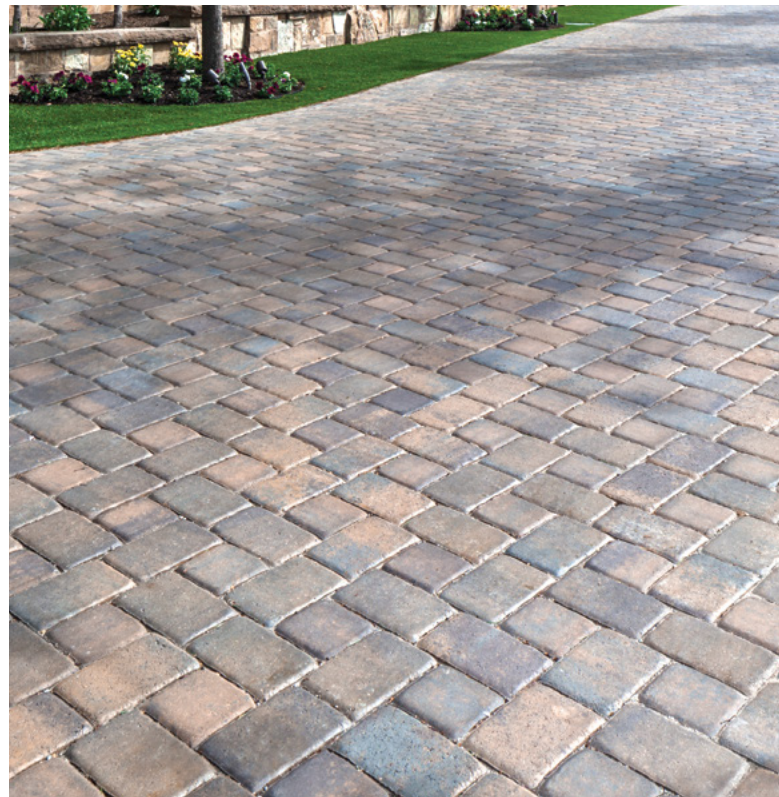


TOSCANA  
6 X 6  
6 X 9  
9 X 12



VICTORIAN  
6 X 9  
9 X 12

# CAMBRIDGE COBBLE®





# CATALINA GRANA<sup>®</sup>



## ABOUT

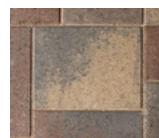
Catalina Grana<sup>®</sup> offers crisp, clean lines and a smooth, linear surface that creates an eye-catching contemporary look.

## APPLICATIONS

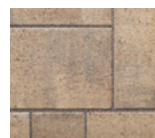
· Walkways · Patios · Pool Decks · Driveways

## SPECIFICATIONS

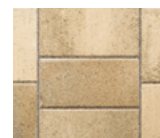
DIMENSIONS	THICKNESS	SQ. FT./ PALLET	PALLET WEIGHT	UNITS PER PALLET
3 Piece Large 6 x 12, 9 x 12, 12 x 12	60mm	120	3,230	160



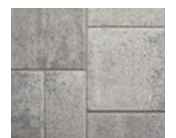
AUTUMN  
3PC LG ■



BELLA  
3PC LG ■■



MONTECITO  
3PC LG ■



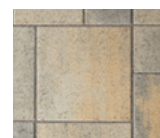
RIO  
3PC LG ■■



SANTA MONICA  
3PC LG ■



TOSCANA  
3PC LG ■



VICTORIAN  
3PC LG ■■





## ABOUT

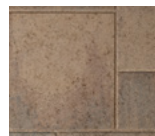
Dimensions™ delivers modular design flexibility and a modern aesthetic. Dimensions™ Slab is ideal for walkways and patios.

## APPLICATIONS

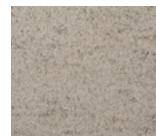
· Walkways · Patios · Pool Decks · Driveways

## SPECIFICATIONS

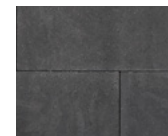
DIMENSIONS	THICKNESS	SQ. FT./ PALLET	PALLET WEIGHT	UNITS PER PALLET
Dimensions™ Slab 12 x 24	60mm	120	3,230	60
Dimensions™ Slab 24 x 24	60mm	80	2,170	20



BELLA  
24 X 24



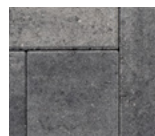
FOUNDRY  
12 X 24  
24 X 24



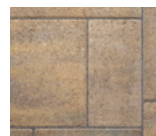
GRAPHITE  
12 X 24  
24 X 24



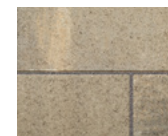
LINEN  
12 X 24  
24 X 24



RIO  
12 X 24



TOSCANA  
12 X 24  
24 X 24



VICTORIAN  
12 X 24  
24 X 24





# DUBLIN COBBLE®



## ABOUT

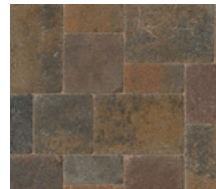
A true classic, Dublin Cobble® has a gently distressed surface and antiqued edges which offer a timeless sophistication and features a wide array of shapes,

## APPLICATIONS

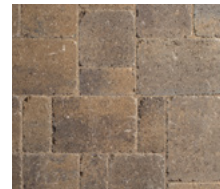
· Walkways · Patios · Pool Decks · Driveways

## SPECIFICATIONS

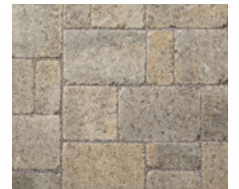
DIMENSIONS	THICKNESS	SQ. FT./ PALLET	PALLET WEIGHT	UNITS PER PALLET
3 Piece 3 x 6, 6 x 6, 6 x 9	60mm	114	3,080	480



BELLA  
3PC



TOSCANA  
3PC



VICTORIAN  
3PC



# HOLLAND STONE



## ABOUT

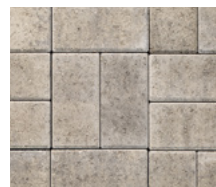
With its simple shape and utilitarian appeal, Holland Stone is a practical choice for a variety of residential and commercial installations. Its exceptional strength and durability combined with a range of captivating color blends add to Holland's popularity.

## APPLICATIONS

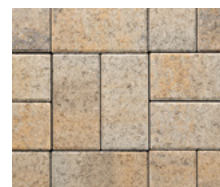
· Walkways · Patios · Pool Decks · Driveways

## SPECIFICATIONS

DIMENSIONS	THICKNESS	SQ. FT./ PALLET	PALLET WEIGHT	UNITS PER PALLET
4 x 8	60mm	120	3,230	540



RIO  
4 X 8



VICTORIAN  
4 X 8





# MELVILLE™ PLANK

## ABOUT

Melville™ Plank offers a smooth face and clean lines to create a stylish, contemporary look with classic appeal. It can be used alone or to add accents or borders to a variety of paver designs.

## APPLICATIONS

· Walkways · Patios · Steps · Pool Decks

## SPECIFICATIONS

DIMENSIONS	THICKNESS	SQ. FT./ PALLET	PALLET WEIGHT	UNITS PER PALLET
3 Piece Large 5 x 11 <sup>13</sup> / <sub>16</sub> , 5 x 15 <sup>3</sup> / <sub>4</sub> , 5 x 19 <sup>11</sup> / <sub>16</sub>	60mm	122.7	3,380	150



GRAPHITE  
3PC ■



RIO  
3PC ■



## ABOUT

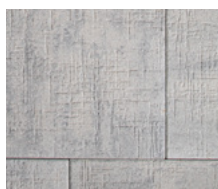
Papyrus™ displays an elegant textural expression reminiscent of hand-tooled stone.

## APPLICATIONS

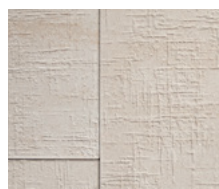
· Walkways · Patios · Pool Decks

## SPECIFICATIONS

DIMENSIONS	THICKNESS	SQ. FT./ PALLET	PALLET WEIGHT	UNITS PER PALLET
3 Piece Large 9 x 18, 18 x 18, 27 x 18	60mm	112.5	3,152	50



SCANDINA GRAY  
3PC ■■



SEPIA  
3PC ■■



# PAPYRUS™ 18



# BELAIR WALL® 2.0



## ABOUT

Belair Wall® 2.0 is ideal for retaining and freestanding wall construction where aesthetics are a key consideration.

## APPLICATIONS

· Walls · Steps

## SPECIFICATIONS

DIMENSIONS	SQ. FT./ PALLET	PALLET WEIGHT	UNITS PER PALLET
Wall 6 x 6 x 8, 6 x 10 x 8, 6 x 16 x 8	30	2,455	60
Cap 3 x 8/7 x 13 <sup>1</sup> / <sub>2</sub>	90	3,510	144
Cap End 3 x 8 x 13 <sup>1</sup> / <sub>2</sub>	24 LN. FT.	912	36



TOSCANA  
CAP ■



VICTORIAN  
WALL  
CAP ■  
CAP END ■

# HIGHLAND STONE®



## ABOUT

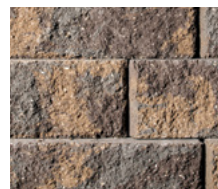
The Highland Stone® freestanding wall features the original rear-lip locator for fast, accurate installation.

## APPLICATIONS

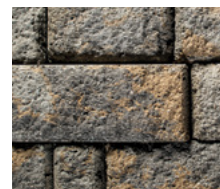
· Walls · Steps

## SPECIFICATIONS

DIMENSIONS	SQ. FT./ PALLET	PALLET WEIGHT	UNITS PER PALLET
FSW - 6 x 6/4 x 9, 6 x 12/10 x 9	32	3,375	96
Cap - 3 x 18/12 x 13	78.75 LN.FT	3,700	63



TOSCANA  
FSW  
CAP ■



VICTORIAN  
CAP ■



# MELVILLE™ WALL

## ABOUT

The Melville Wall™ freestanding and retaining wall system is comprised of a double-sided wall unit, along with a matching cap. All system components feature a simplistic design with modern, smooth faces and subtle chamfers.

## APPLICATIONS

· Walls · Caps

## SPECIFICATIONS

DIMENSIONS	SQ. FT./ PALLET	PALLET WEIGHT	UNITS PER PALLET
Wall - 4 x 20 x 10	26.67	3,120	48
Cap - 2 x 20 x 13	12 LN. FT.	3,100	72



GRAPHITE CAP ■



LINEN WALL ■



RIO WALL CAP ■



## ABOUT

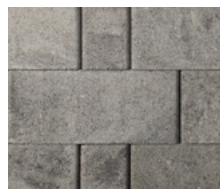
The Steeple Crest™ wall blocks offer the a smooth look to your retaining or freestanding wall in your hardscape environment.

## APPLICATIONS

· Walls · Columns · Fire Pits  
· Steps · Kitchens

## SPECIFICATIONS

DIMENSIONS	SQ. FT./ PALLET	PALLET WEIGHT	UNITS PER PALLET
Unit 1 - 6 x 6/4 x 10 Unit 2 - 6 x 12/10 x 10 Unit 3 - 6 x 16/14 x 10	26	2,720	60
Cap - 3 x 12/8 x 12	60 LN. FT.	2,039	72



RIO WALL CAP ■

# STEEPLE CREST™





# WESTON STONE™ & CASTLEMANOR® CAP



## ABOUT

The flexibility of Weston Stone™ is unmatched. Its natural stone appearance allows for a wide range of applications and design options.

## APPLICATIONS

- Walls
- Steps

## SPECIFICATIONS

DIMENSIONS	SQ. FT./ PALLET	PALLET WEIGHT	UNITS PER PALLET
Universal - 4 x 8 x 12	33.5	2,899	100
Castlemanor Cap - 3 x 12/8 x 12	60 LN. FT.	2,039	72



BELLA UNIV



TOSCANA UNIV CM CAP



VICTORIAN UNIV



# ANGLIA EDGER®



## ABOUT

A natural chiseled finish and tapered ends accentuate the natural texture and flexibility of the Anglia Edger®. The large multi-size units of the Anglia Edger create a natural-looking curb with a minimal number of joints.

## APPLICATIONS

- Walkways
- Driveways
- Patios
- Flowerbeds

## SPECIFICATIONS

DIMENSIONS	LN. FT./ PALLET	PALLET WEIGHT	UNITS PER PALLET
Unit 1 - 5 <sup>1</sup> / <sub>4</sub> x 8 x 8 Unit 2 - 5 <sup>1</sup> / <sub>4</sub> x 8 x 10 <sup>1</sup> / <sub>2</sub> Unit 3 - 5 <sup>1</sup> / <sub>4</sub> x 8 x 15 <sup>5</sup> / <sub>8</sub> Unit 4 - 5 <sup>1</sup> / <sub>4</sub> x 8 x 18	69.75	2,650	60



BELLA EDG



TOSCANA EDG



VICTORIAN EDG





# MELVILLE™ CURB

## ABOUT

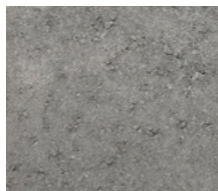
Melville™ Curb is the perfect complement for any paver with a smooth, contemporary finish. With its unique length and sleek design, it gives your outdoor landscaping an elegant and modern look.

## APPLICATIONS

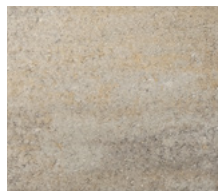
· Walkways · Patios · Driveways

## SPECIFICATIONS

DIMENSIONS	LN. FT./ PALLET	PALLET WEIGHT	UNITS PER PALLET
4 x 24 x 6 <sup>1</sup> / <sub>2</sub>	96	2,480	48



FOUNDRY CURB ■



VICTORIAN CURB ■

## ABOUT

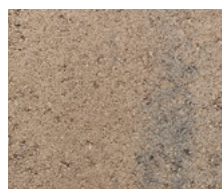
Marina™ Coping features a smooth surface and can be used as a finishing accent for an array of outdoor living features, including pools, steps, seat walls, outdoor kitchen counters and foot ledges, and more.

## APPLICATIONS

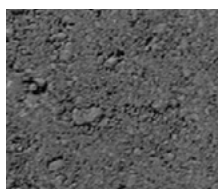
· Walkways · Patios · Pool Decks · Steps  
· Patios · Columns · Kitchens

## SPECIFICATIONS

DIMENSIONS	SQ. FT./ PALLET	PALLET WEIGHT	UNITS PER PALLET
6 x 12 x 2 <sup>3</sup> / <sub>8</sub>	63	1,760	126



BELLA 6 X 12 ■ ■



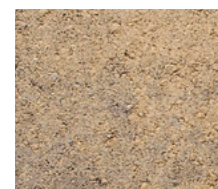
GRAPHITE 6 X 12 ■ ■



MONTECITO 6 X 12 ■



RIO 6 X 12 ■



TOSCANA 6 X 12 ■ ■



VICTORIAN 6 X 12 ■ ■





**IN-STOCK  
PRODUCTS**

You'll have full confidence with our IN-Stock products for anything you need to finish your project worry free.

Whether you are designing, bidding or installing, SiteOne will have what you need.

**ORDER-IN  
PRODUCTS**

For all other products featured in the Belgard® catalog, take advantage of our Order-IN Program and have them delivered as quickly as possible.

**ASK AN ASSOCIATE OR CONTACT US TO LEARN MORE**

**#1039 | El. Cajon**

13288 Highway 8 Business  
El Cajon, CA 92021-1871  
**619.561.6003**

**#1040 | Temecula**

42368 Rio Nedo  
Temecula, CA 92590-3708  
**951.296.3433**

[www.SiteOne.com./store-finder](http://www.SiteOne.com./store-finder)

*PLEASE NOTE: Product color may vary. We have made every effort to accurately represent the product color in our marketing materials. The final aesthetic of any project will be governed by the artistic installation of the contractor.*